

SANTA FE *GUARANTEES* A DRY AND ODOR-FREE BASEMENT.

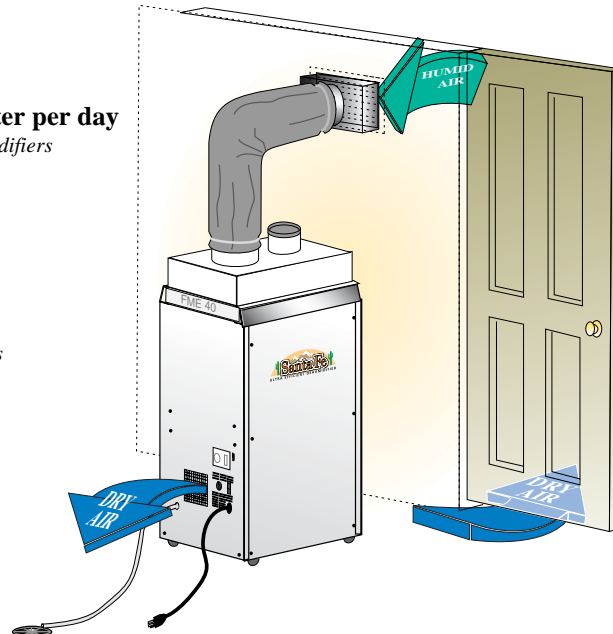


Therma-Stor

PO Box 8050
1919 S. Stoughton Road
Madison, WI 53708-8050

The Santa Fe Ultra Efficient Dehumidifier

- **Removes over 100 pints of water per day**
Triple the performance of other dehumidifiers
- **2-3 times more efficient**
5 to 8 pints per Kwh
- **Plugs into standard outlet**
Draws less than 7 amps
- **Low temperature design**
Continued performance in cooler areas
- **Automatic defrost system**
Operates down to 55° F.
- **Satisfaction guaranteed**
Or your money back
- **Optional duct kit**
Remote location for finished basement



Blower	250 CFM (0" W.G.)
Kilowatts	.061 (80°F. 60%)
Supply Voltage	115 volt -1- 60 hz.
Amps	6.8

Minimum performance at set conditions:		
Intake Air	70°, 60%	80°, 60%
Water removal*	85 lbs	104 lbs
Pints/KWH	5.3	6.8

* per 24 hour period

	UNIT	SHIPPING
Width	20 inches	25 inches
Height	36 inches	41 inches
Depth	17 inches	24 inches
Weight	110 lbs.	135 lbs.

Your basement won't feel like a basement.

Does your basement smell like a basement? Is it damp and musty? Have you been frustrated by home dehumidifiers that are ineffective? The Santa Fe Ultra Efficient Dehumidifier is guaranteed to dry out your basement and eliminate those musty basement odors *or your money back*.

Moisture in the home.

Moisture in the home has many sources: plants, pets, people, cooking, washing, ground water, and most importantly, the air. The moisture from the outside air infiltrating the home is enough to overwhelm residential dehumidifiers. A large-capacity dehumidifier is necessary to ensure that enough moisture is removed to prevent mold, mildew, and bacterial growth.

The moisture in the air (humidity) is constantly trying to equalize throughout the house. If there is more humidity upstairs, it works its way downstairs, and vice versa.

The amount of moisture in the air is referred to as the *specific humidity*. It is the weight of the water found in a pound of air. The specific humidity is expressed as a decimal, e.g., .012 lb. The amount of moisture present in the air at a specific temperature in relation to the maximum amount the air can hold is *relative humidity* (RH). It is affected by the air temperature and is expressed as a percentage, e.g., 60% RH. The cooler the air is, the less moisture it can hold. To the right, you can see that, although the temperature and relative humidity vary, the specific humidity remains the same. Basements are naturally cooler than the rest of the house. This means that the relative humidity is always higher in the basement.

Benefits of owning a Santa Fe.

Relative humidity levels rising above 55% stimulate the growth of mold, mildew, bacteria and other biological allergens, which generates those "musty" basement odors. The lower relative humidity eliminates those musty odors. Your basement won't smell like a basement! The Santa Fe Ultra Efficient Dehumidifier will maintain the basement relative humidity between 45-50%. And unlike other residential dehumidifiers that freeze-up in cool conditions, the Santa Fe is designed to operate down to 55° and will continue to effectively remove humidity. The Santa Fe also adds a little heat to the basement air. So a cold, damp basement becomes a little warmer and a lot drier.

The reduced humidity creates a less hospitable climate for many "bugs," including dust mites, centipedes, silver-fish, and spiders. Your basement will have fewer "creepy critters."

Now your basement can be used for additional comfortable living space and the safe storage of clothing, books, heirlooms, and collectibles. Therma-Stor dehumidifiers can be found in museums, libraries, and art galleries.

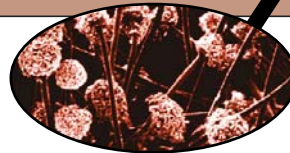
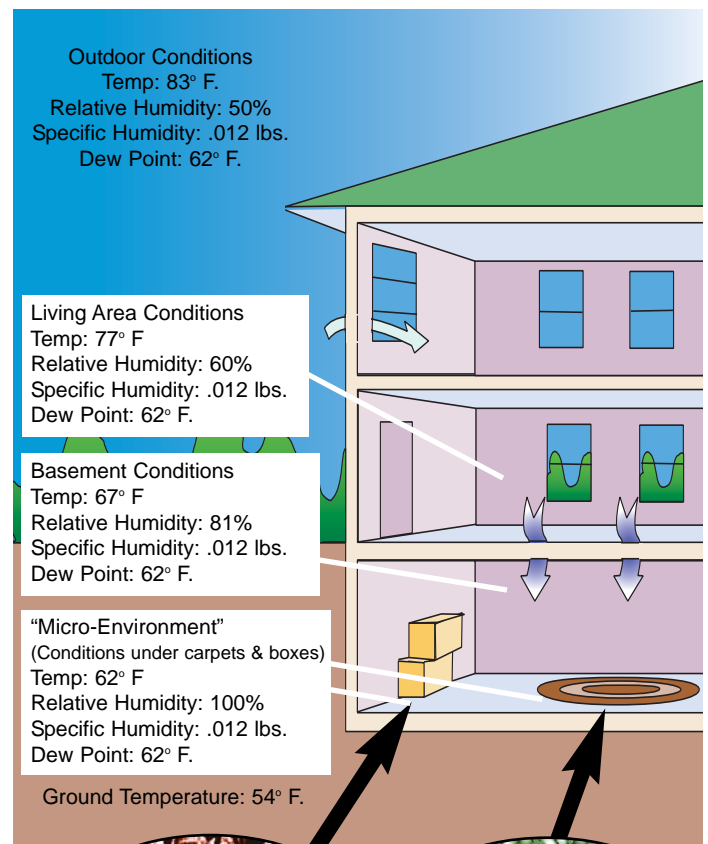
For more information on the Santa Fe Ultra Efficient Dehumidifier and a free video on basement humidity, call us today at **1-800-533-7533**.



Therma-Stor

P.O. Box 8050 Madison, WI 53708
1-800-533-7533 Local: 608-222-5301
www.thermastor.com

Why Basements Are Damp and Musty



Mold and Mildew

Mold and mildew are musty-smelling fungi that thrive in moist conditions. Even short periods of high humidity or condensation can cause mold and mildew to grow and release their health-affecting spores and mycotoxins.



Bacteria

Bacteria is the cause of many diseases including pneumonia, tuberculosis, and legionnaire's disease. Gram-negative bacteria produce endotoxins that cause inflammation and affect the human immune system.



Dust Mite



Santa Fe
ULTRA EFFICIENT DEHUMIDIFIER